



Artisans of Bengal

Ganges River Cruise

7 Nights aboard *Ganges Voyager I* | September 24 - October 3, 2027





September 19 & 20 – Fly to Delhi

September 21 – Delhi

Arrive in Delhi, clear customs and immigration, and meet your assistant for a transfer to the hotel. Delhi, the capital of India, has a history that spans over 3,000 years.

September 22 – Delhi

After breakfast, visit Old Delhi, driving past the Red Fort and enjoying a Pedicab ride around Chandni Chowk, an old shopping street with narrow lanes. Visit Jama Masjid, a stunning example of Mughal architecture. Explore St. James Church, Delhi's oldest church, and learn about its historical significance during British colonial times. In the afternoon, visit New Delhi and explore Humayun's Tomb, a UNESCO World Heritage Site and precursor to the Taj Mahal. Drive past India Gate, a monument honoring soldiers who died in World War I, and visit the Temple of the Sikhs (Gurdwara). (B)

September 23 – Delhi to Agra

After breakfast, drive to Agra (approximately 4 hours via the Expressway). Upon arrival, check in at the hotel and then visit the Taj Mahal, the iconic monument to love and a masterpiece of Mughal architecture. In the evening, attend a talk on Sacred Spaces: A Blend of Faiths in Architecture. (B)

September 24 – Agra to Jaipur

After breakfast, visit Agra Fort, a UNESCO World Heritage Site and one of India's best-preserved forts. Explore Akbari Church, the historic site where Christmas carols were first sung in India. Later, drive to Jaipur (approximately 4.5 hours) and check in at the hotel. In the evening, explore the colorful bazaars of Jaipur's old walled city. (B)

September 25 – Jaipur

After breakfast, visit Amber Fort, a majestic fort with impressive gates, temples, palaces, and gardens. Travel to the Pink City and visit the City Palace, a blend of traditional Rajasthan and Mughal architecture, and explore its courtyards and gardens. Visit Jantar Mantar, an astronomical observatory with remarkable stone and marble instruments. In the evening, witness an Arti ceremony at a Hindu temple. (B)

September 26 – Jaipur to Kolkata

After breakfast, transfer to the airport for your flight to Kolkata, where you will board the ship. (B)

**A 3.5% surcharge will be added to all credit card transactions.*

Itinerary

September 24 & 25 – Fly to Kolkata

September 26 – Kolkata

Arrive in Kolkata and transfer to the jetty to embark on the ship. Enjoy lunch onboard. After lunch, proceed on a panoramic tour of Kolkata, highlighting well-preserved British colonial buildings, including the Writers' Building, General Post Office, High Court, Raj Bhavan (Governor's House), Town Hall, Council House, Treasury Building, Reserve Bank of India, and Dalhousie Square. A stop will be made at the Grand Victoria Memorial for a photo opportunity. Next, visit St. Paul's Cathedral, the city's largest cathedral and a symbol of European heritage. Built between 1839 and 1847, it is renowned for its Indo-Gothic architecture, vibrant stained-glass windows, and Florentine Renaissance-style frescoes. (L, D)

September 27 – Kolkata

After breakfast, visit Kolkata's Flower Market, located beneath the cantilevered Howrah Bridge. The market is bustling with vendors and buyers exchanging flowers, and there are artists creating garlands and ornaments for temples, weddings, and other occasions. Next, visit Kumartuli, a traditional potters' quarter, famous for sculpting clay idols used in festivals. These artisans make idols of gods and goddesses for local and regional worship. Before returning to the ship, visit Mother Theresa's Home and Tomb. Mother Teresa founded the Missionaries of Charity in 1952, then lived and worked here until her death in 1997. Return to the ship for lunch and sail upstream, passing under the Howrah Bridge while observing colonial buildings along the Ganges River. In the afternoon, attend a talk by an expert about the iconic churches of Kolkata and their role in social welfare. (B, L, D)

September 28 – Bally Bridge to Bandel

Set sail upstream to Bandel, founded by Portuguese settlers around 1660. Visit the Hooghly Imambara, a significant Shiya pilgrimage center built in 1841. This two-story building houses pilgrims and classrooms for Quran teachings. It also features a Victorian-era clock and stunning Persian chandeliers. Continue to the Basilica of the Holy Rosary, also known as Bandel Church. Founded in 1599, it is one of the oldest Christian churches in West Bengal, dedicated to Nossa Senhora do Rosário (Our Lady of the Rosary). (B, L, D)

September 29 – Bandel to Kalna

Sail to Kalna, enjoying breakfast and lunch onboard. Upon arrival, ride e-rickshaws to visit the Rajbari temple complex. The Nabakailas temple features 108 eight-slope-roofed shrines dedicated to Lord Shiva, and other temples showcase intricate terracotta plaques depicting Hindu epics and daily life. Return to the ship, walking through the local vegetable market. (B, L, D)

September 30 – Kalna to Nabadwip and Mayapur

Sail to Nabadwip while having breakfast and lunch onboard. Nabadwip is the birthplace of Saint Shri Chaitanya Mahaprabhu, the founder of the Hindu Vaishnav religion. After lunch, take a walking tour of the riverbank village, where local people engage in handloom weaving of cotton fabric, such as saris and stoles. Later, ride a country boat across the river to Mayapur, the headquarters of the International Society for Krishna Consciousness (ISKCON). Explore the pilgrim's bazaar, meet Krishna followers, and visit the temple, comparable in size to the Vatican. (B, L, D)

October 1 – Mayapur to Guptipara and Fulia

Enjoy a short sail to Guptipara after breakfast. Explore the town, visiting Vaishnav temples with remarkable terracotta artwork and a potter's home to observe artisans creating clay items. Return to the ship for lunch. Afterward, sail to the village of Fulia, known for its weaving of Jacquard and Jamdani sarees. (B, L, D)

October 2 – Chandannagar to Serampore to Kolkata

After breakfast, sail to Chandannagar, a former French colony. Explore colonial buildings along the promenade, including the former French governor's residence, now a museum. Visit the Sacred Heart Church, a heritage site that showcases French architectural influence in India. Return to the ship and sail to Serampore. After lunch, take a walk through the old quarters to visit the Danish Tavern, other Danish heritage monuments, and St. Olav's Church, one of the few remaining structures from Danish rule in Bengal. (B, L, D)

October 3 – Kolkata

Return to the airport to begin your journey home with incredible memories of your time in India! (B)

B = Breakfast / L = Lunch / D = Dinner



CRUISE PRICING*

| | | |
|-----------|-----------------|----------|
| SS | Signature Suite | \$4,398* |
| CS | Colonial Suite | \$4,498* |
| HS | Heritage Suite | \$4,598* |
| VS | Viceroy Suite | \$4,698* |
| MS | Maharaja Suite | \$4,798* |

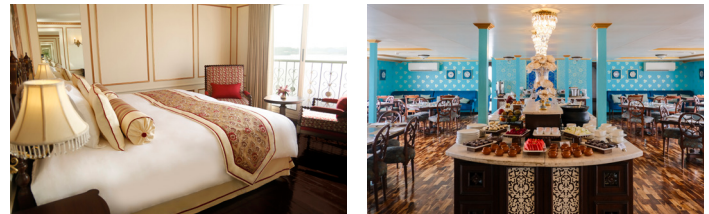
***Rates are per person, based on double occupancy**

A 3.5% surcharge will be added to all credit card transactions.

Does not include onboard gratuities.



ANTARA



INCLUDED FEATURES

Fine dining

- Indian brand mineral/bottled water, tea, coffee, and soft drinks are included daily.
- Two glasses of Indian wine or beer are included during lunch and dinner onboard.
- One house cocktail of the day in the bar in the evening.
- Breakfast and fine dining experience served onboard.

Extras

- Viceroy & Mahajara Suites include butler service, laundry service, a bottle of wine on arrival, and a one-hour spa treatment.

PLEASE NOTE:

- Onboard currency is Indian Rupees. Amex, Mastercard, and Visa are also accepted.
- Some excursions may require taking tenders/country boats, steps, and uneven areas.
- Internet along the Ganges River is variable depending on mobile phone towers. Wifi on the ship has limited bandwidth, mainly for communications and sending/receiving emails. Cannot support sending videos, photos, and other heavy documents.

PROGRAM CONDITIONS

INCLUDED IN PRICE:

• International Airfare and overseas transfers • Fuel Surcharges \$350 • Government Taxes \$98
 • Deluxe cruise accommodations (based on double occupancy) • Most shore excursions • All meals on ship, meal beverages, and other meals as indicated • Administrative Fee • Cruise Tax

NOT INCLUDED IN PRICE:

• Pre-Tour and optional sightseeing as listed in the brochure • Visa(s) • Onboard Gratuities (These will appear automatically on your onboard statement, and are the guest's responsibility to pay on board the ship) • Any additional services or fees not included above • Optional Travel Protection Plan (see premium schedule) • Miscellaneous fees such as passports, laundry, excess baggage, and other items of personal nature • \$100 Document fee for Non-US and Non-Canadian residents • Required Vaccinations • Required medical testing before, during, and/or after travel

ACCOMMODATIONS:

Price is per person based on double occupancy. Single room/stateroom supplement has the following additional charges: **Category SS - \$3198; CS - \$3248; HS - \$3398; VS - \$3398; MS - \$3698. \$698 for Golden Triangle Pre-Tour.** While EO will try to match roommates, EO cannot guarantee one will be available. Roommates may be assigned as late as 35 days prior to departure and, if one is not available, the single room/cabin charge applies.

PAYMENT INFORMATION:

A 3.5% surcharge will be added to all credit card transactions.

PAYMENT SCHEDULE:

| Payment | Amount | Due Date |
|--------------------------|--|---------------------------------|
| Initial Deposit | \$500 | Due at the time of registration |
| Second Deposit | \$500 | Due 09/24/26. |
| Third Deposit | \$1,000 | Due on 01/27/27. |
| Final Payment | 04/27/27. If paid after the due date, a late payment fee of \$100 will be assessed. | |
| Travel Protection Amount | The Travel Protection Plan premium will be due no later than 04/26/27 to be in full effect. Travel protection premiums must be paid in addition to your deposits and in advance of the final payment for coverage to be in effect. | |
| Cabin Availability | After 01/27/27 or once we have sold out of our allotment of cabins we can no longer guarantee cabin pricing. Cabins purchased after this date will be subject to availability and may require a supplemental charge. | |

REGISTRATIONS RECEIVED after April 27, 2027:

We welcome registrations after 04/27/27. Registrations received between 04/28/27 - 06/26/27 will incur a fee starting at \$100 per person. Registrations received between 06/27/27 - 07/11/27 will incur a fee starting at \$200 per person. Registrations received between 07/12/27 - 07/26/27 will incur a fee starting at \$400 per person. Registrations received on 07/27/27 or later will be subject to cabin availability and may require a supplemental cabin charge as well as the air fees above. Additional fees will be advised upon registration.

CANCELLATION FEES:

100% of Cancellation Fees are covered by the optional Travel Protection Program, provided the premium has been paid and the reason for cancellation is coverable. Those who do not take travel protection should be aware of the following per-person cancellation penalties: From the day of registration to 365 days prior to departure, you will be charged a \$150 non-refundable cancellation fee plus any airline, land, and cruise fees. Additionally, thereafter, you will be charged any airline penalties, land penalties, cruise penalties, and a single room supplement if your cancellation forces your roommate into a single plus the following per-person charges: 364-301 days = \$250; 300-241 days = \$500; 240-181 days = \$1,000; 180 - 151 days = 50% of total cost; 90-61 days = 75% of total cost; 60-day of departure = 100% of total cost. Submit cancellation in writing. On or after day of departure, there will be no refund for any services not used.

STATEMENTS OF RESPONSIBILITY

EOT does not accept responsibility for losses or additional expenses due to delay or changes in air schedules, hotel overbookings, other hotel related problems or causes, and/or travel supplier cancellations or postponements. Travel suppliers include all tour operators, cruise lines, airlines, hotels, bus companies, entertainment venues, and any other travel supplier used to operate the tour. All such losses or expenses will be the responsibility of the passenger. The right is reserved to make adjustments to the itinerary as deemed desirable to EOT and the right is reserved to cancel any tour prior to departure. If a tour is canceled beyond the control of EOT, EOT will provide a refund or a future travel credit to be used two years from the date of issuance for the value of all funds paid by the passenger less nonrefundable travel supplier prepaid deposits, travel supplier change fees, nonrefundable travel protection premiums, and a \$150 administration fee.

FIT TO TRAVEL STATEMENT:

Passengers registering for the tour accept the responsibility for being in good health and able to walk and travel on the tour. Because many of the sites are not accessible to the physically challenged and space limitations on tour buses, wheelchairs and scooters cannot be accommodated. Those needing oxygen or other ambulatory assistance will find the tour extremely limiting in their experiences. Persons using C-pap machines requiring distilled water will need to inform us ahead of time, so we can work with local operators to prepare as it is not always available. EOT reserves the right to refuse or revoke travel to anyone who is, in the sole judgment of EOT, incapable of group travel without causing undue demands upon the staff or other tour participants. Accessible rooms/cabins are limited and subject to confirmation after receiving the passenger's written request. If you have questions, please see eo.travel/fit-to-travel-statement or contact Educational Opportunities Tours Inc. for more details.

PASSPORT INFORMATION & CHECK IN PROCESS:

Passport information must be submitted to our office no later than 04/26/27. Failure to provide your passport information to our office by this date may result in change fees or denial of travel. Discrepancies in information may result in change fees, delays in receiving travel documents for your trip, or denial of travel. Any fees

incurred due to discrepancies are the responsibility of the passenger. You will also be required to check in with the cruise line prior to travel and according to the cruise line's requirements and instructions provided in your final documents.

PRICE INCREASES:

All prices quoted in this brochure are subject to change prior to payment in full due to currency fluctuations, fuel surcharge increases, government taxes and fees increases or unforeseen circumstances. In addition, you may be subject to a price increase after payment in full has been received due to potential government imposed taxes and fees.

AIRLINE ROUTES and TICKETS:

In order to keep prices low, EO does not guarantee the most direct routing to your final destination. Once issued, airline tickets cannot be changed or refunded thereafter. Air transportation to/from your destination will be economy class on IATA and ARC carriers utilizing APEX or SUPER APEX non-refundable, non-amendable tickets for groups of 10 or more flying together on entire itinerary. If you choose to depart from a different city than your group or traveling companion, or deviate your flight and/or trip plans, and/or you are taking a pre or post tour, you may fly on a different scheduled flight(s) than the rest of your group. If you make your own air arrangements, you are responsible for booking all needed flights for your travel unless specified otherwise. Contact guest services for further details.

FLIGHT TIMES and SEATING:

All flights are subject to change by the airlines without advance notice. EOT is not responsible for such changes or delays and does not reimburse expenses resulting from such delays. If you are making your own flight arrangements to the departure city, we recommend you purchase a ticket that can be exchanged without large penalties. There is no advance seat selection for groups on most airlines. Early check-in is necessary to secure seats with travel companions and those with special needs. Due to security measures taken at airports, it is advisable to arrive at the airport three hours prior to departure time. Seating is solely under the control of the airlines.

ADDITIONAL AIRLINE FEES:

You will likely incur additional airline checked baggage fees that are not included in the price of the tour. These fees vary by airline and are at the airline's discretion on each segment of the flight itinerary. Additionally, you may incur optional fees (food, excess baggage, overweight baggage, items of personal nature, etc.) as well. For more information, visit eo.travel/travel-info/airline-fees.

ON OWN DEVIATIONS:

On Own Deviations from the standard tour program must be submitted in writing and are subject to any additional airline fees, if applicable. Transfers for passengers who deviate are not included.

ITINERARY CHANGES:

Every effort has been made to ensure the accuracy of this brochure. While EOT will make every effort to ensure you will see all sites listed in this brochure, the availability of sites, the order of sites and/or days and number of days may be altered to accommodate changes in cruise line, airline, hotel schedules, and local conditions. No changes to the itinerary are effective unless approved in writing and signed by an authorized officer of the tour operator. Except as stated herein, no other person is authorized to cancel, modify or vary the tour arrangements or to make any representation of warranty concerning the tour. The cruise line has the ultimate control over your voyage and may, without notice, alter the length of the cruise and the order of and/or inclusion of ports. EOT is in no way responsible for these changes and does not make reimbursement for such changes.

PREGNANCY/INFANT REGULATIONS:

As to pregnancy, a woman cannot have begun her 24th week of pregnancy at any time before or during the cruise. If you are pregnant, please provide a medical note upon arrival at the pier for check-in from your physician stating your expected due date and medical fitness to travel. If you are in the 24th week or have completed it you will not be allowed to board. Due to the limited medical facilities, infants must be at least one year old on the first day of the cruise.

VALIDITY DATE:

This brochure is valid until **05/25/26**. If validity date has passed, current brochures may be found at www.eo.travel. Registrations will still be accepted after the validity date.

RELEASE INFORMATION:

Payment of deposit indicates permission for EOT or its agents to record the registrant's participation and appearance on video tape, audio tape, film, photograph, or any other medium and to use the registrant's name, likeness, voice, comments, submitted documentation, written papers, and/or biographical material without restrictions or limitation for any advertising, marketing, publicity, educational or promotional purpose which EOT or its agents deem appropriate, unless the registrant or guardian otherwise notifies EOT in writing prior to departure.

Enrollment in, payment of deposit and/or acceptance of final documents, vouchers, or tickets shall be deemed to be consent to the Passenger Agreement and Program Conditions of the brochure. Prices are based on tariffs in effect as of January 1 of the previous year and are subject to adjustment without notice in the event of any change or currency fluctuation.

Except where otherwise stated, EOT acts only as agent for the relevant supplier in securing hotels, transportation and other travel services and in no event shall EOT be liable for failure by any such supplier to render any transportation, lodging or other travel service to be provided on the tour. **The passenger agrees that EOT assumes no liability for injury, death, damage, loss, theft, accident, delay, any lost or damaged luggage, or irregularity which may occur by reason of any negligent or willful act or omission of any suppliers of service.**

EOT does not own or operate any of the suppliers of services to your tour. Without limiting the foregoing, the passenger agrees to release EOT and to hold EOT harmless for any liability, loss or expense arising from any defect in any vehicle, plane, boat, bus, car, van, or other vehicle, act of war or insurrection, terrorist activity, revolt or other civil uprising, military action, Pandemic, strikes, or labor unrest or any Act of God or for any other act of any third party. Florida law will be applicable to any dispute which arises out of or concerns this brochure or your tour. Any and all litigation must be brought only in courts in Polk County, Florida to the exclusion of litigation anywhere else in the world. Educational Opportunities Tours is registered with the State of Florida as a Seller of Travel. Registration No. ST24130. CST2027682-40.

Travel Protection Plan - Premium Rates - For a full description of the plan, go to: www.tripmate.com/wpF427X

| Trip Cost | Cost* | Trip Cost | Cost* | Trip Cost | Cost* |
|---------------|-------|---------------|-------|-----------------|--------|
| \$0 - \$1000 | \$109 | \$3501-\$4000 | \$429 | \$6501-\$7000 | \$759 |
| \$1001-\$1500 | \$159 | \$4001-\$4500 | \$489 | \$7001-\$8000 | \$869 |
| \$1501-\$2000 | \$219 | \$4501-\$5000 | \$539 | \$8001-\$9000 | \$979 |
| \$2001-\$2500 | \$269 | \$5001-\$5500 | \$599 | \$9001-\$10,000 | \$1089 |
| \$2501-\$3000 | \$319 | \$5501-\$6000 | \$649 | | |
| \$3001-\$3500 | \$379 | \$6001-\$6500 | \$709 | | |

See our website for more pricing options

| Schedule of Benefits | Maximum Benefit |
|--|--|
| Trip Cancellation | Up to 100% of the non-refundable Trip Cost |
| Trip Interruption | Up to 100% of the non-refundable Trip Cost |
| Missed Connection | \$500 |
| Medical Expense / Emergency Evacuation | Up to \$150 Per Day, to Maximum of \$1,500 |
| Accident & Sickness Medical Expense | \$25,000 |
| Medical Evacuation & Repatriation of Remains | \$50,000 |
| 24 Hour Accidental Death & Dismemberment | \$25,000 |
| Baggage & Personal Effects | \$1,000 |
| Baggage Delay | Up to \$200 |

THIS IS A BRIEF DESCRIPTION OF THE PLAN, FOR FURTHER INFORMATION ASK FOR THE TRAVEL PROTECTION COVERAGE SUMMARY WHICH FULLY DETAILS THE COVERAGES, PROVISIONS, LIMITATIONS AND EXCLUSIONS OF THE PLAN OFFERED AND IS AVAILABLE TO YOU, UPON REQUEST, AT ANY TIME.

The plan cost includes the plan premium and a fee for non-insurance assistance services. You may obtain information on the plan fees by emailing assistancefees@tripmate.com.

Conditions and Limitations

The Travel Protection Plan is only available for citizens or residents of the United States of America. This advertisement contains highlights of the plans developed by Trip Mate, a Generali Global Assistance & Insurance Services brand, which include travel insurance coverages underwritten by United States Fire Insurance Company, Principal Office located in Morristown, New Jersey, under form series T7000 et al, T210 et al and TP-401 et al, and non-insurance Travel Assistance Services provided by Generali Global Assistance and FootprintID. The terms of insurance coverages in the plans may vary by jurisdiction and not all insurance coverages are available in all jurisdictions. Insurance coverages in these plans are subject to terms, limitations and exclusions including an exclusion for pre-existing medical conditions. In most states, your travel retailer is not a licensed insurance producer/agent, and is not qualified or authorized to answer technical questions about the terms, benefits, exclusions and conditions of the insurance offered or to evaluate the adequacy of your existing insurance coverage. Your travel retailer may be compensated for the purchase of a plan and may provide general information about the plans offered, including a description of the coverage and price. The purchase of travel insurance is not required in order to purchase any other product or service from your travel retailer. CA DOI toll free number is 800-927-4357. The cost of your plan is for the entire plan, which consists of both insurance and non-insurance components. Individuals looking to obtain additional information regarding the features and pricing of each travel plan component, please contact **Trip Mate**, a Generali Global Assistance & Insurance Services brand; P.O. Box 527, Hazelwood, MO 63042; 1-833-297-2255; assistancefees@tripmate.com. We are licensed in all states. While Trip Mate markets the travel insurance in these plans on behalf of USF, non-insurance components of the plans were added to the plans by Trip Mate, and Trip Mate does not receive compensation from USF for providing the non-insurance components of the plans.