

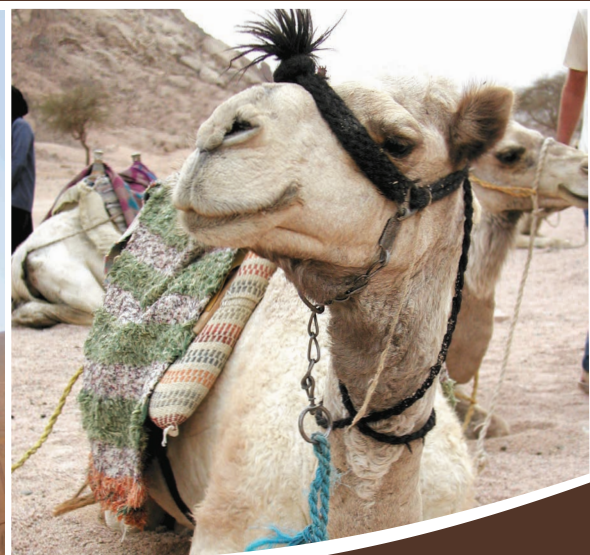
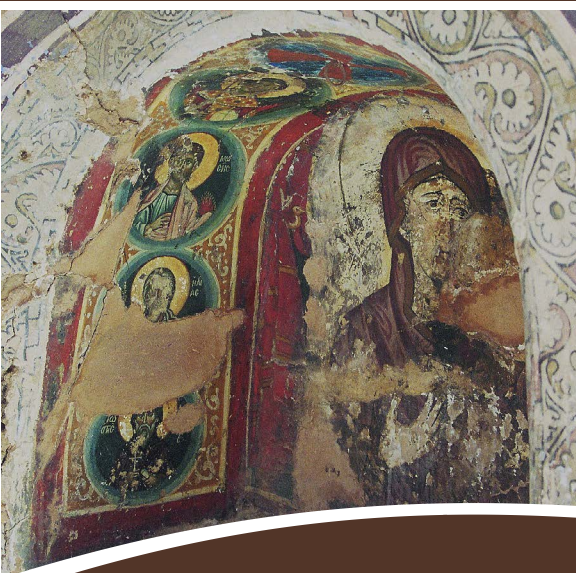


Join Rev. Dave Vasquez & New Life Community Church

Splendors of Egypt

In the Footsteps of Moses, Joseph & the Holy Family

October 31 - November 10, 2023



EO 
Educational Opportunities Tours

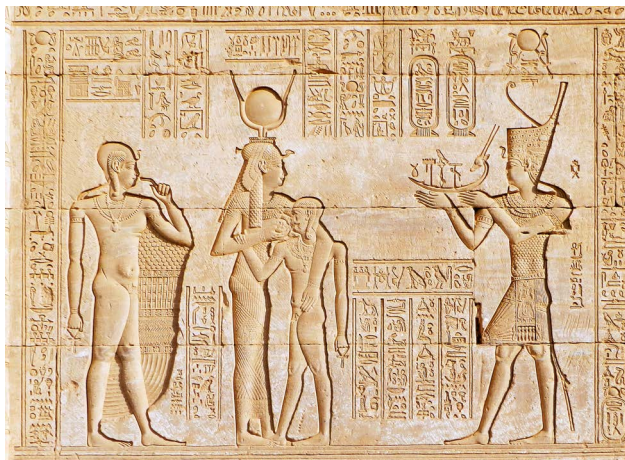
50TH
ANNIVERSARY
EST. 1973

www.EO.travel
800-247-0017

Scan to
Travel with Us!



ITINERARY



October 31 – Depart the USA

Depart the USA on an overnight flight.

November 1 – Arrive in Cairo

You will be welcomed at the Cairo airport by our representative and transferred to your hotel to enjoy dinner before retiring for the night.

November 2 – Cairo

After breakfast, head to the Museum of Egyptian Antiquities, known commonly as the Egyptian Museum and home to over 120,000 ancient Egyptian antiquities with a representative amount available on display. Later, visit the Pyramids of Giza, one of the only existing Wonders of the Ancient World, and the nearby Great Sphinx of Giza, the largest and most well-known Sphinx.

November 3 – Fly to Aswan – Cruise Embarkation

Following breakfast, board your flight destined for Aswan. Embark on your Nile Cruise prior to lunch. This afternoon, tour the Aswan High Dam, the pride of modern Egypt. Visit the Aga Khan Mausoleum and the Granite Quarries to see the Unfinished Obelisk, and finally to the Temples of Philae, where you will visit the Great Temples of Isis and Hathor.

November 4 – Kom Ombo

Today, sail to Kom Ombo to visit the only temple dedicated to two contrasting gods: Sobek, the crocodile-headed god of the underworld, and Haroeris, the winged god of the sky. Return to the ship and cruise to Edfu.

November 5 – Temple of Horus and Luxor

This morning, you will visit one of the best-preserved temples of Egypt located at Edfu. This temple was dedicated to the god Horus, the principal of resurrection. He is depicted in his role as avenger of his father, Osiris, who was murdered by his brother, Seth. Continue sailing to Esna and cross the Nile Locks on your way to Luxor. Visit the magnificent Temple of Luxor with its avenue of sphinx statues and mighty monumental columns. Continue to the Karnak Temple, which took over 2,000 years to build and is the largest religious building ever constructed. See the famed Hypostyle Hall, the Obelisks of Queen Hatshepsut and Thutmose III, the temple of Amon, the Granite Scarabeus and the Sacred Lake.

November 6 – Disembarkation – Valley of the Kings and Queens

In Luxor, visit the vast burial city called the Necropolis of Thebes, located on the West Bank of the Nile. Your visit will take you to the Colossi of Memnon, the Temple of Queen Hatshepsut at Deir El Bahari, the Valley of the Kings, and the nearby Valley of the Queens. This afternoon, board your flight en route to Sharm el Sheikh.

November 7 – Sharm el Sheikh

Today is yours to relax and explore Sharm el Sheikh on your own.

Itinerary continued...

November 8 – St. Catherine’s

Travel to Mount Sinai and St. Catherine’s Monastery, built in the 6th century to protect what was believed to be the “Burning Bush.” Enjoy a short hike of Mount Sinai and later enjoy a traditional Bedouin dinner.

November 9 – Exodus Route to Cairo

Travel to Cairo via the route of the Exodus. Overnight in Cairo and prepare for your flights home.

November 10 – Return to the USA or Enjoy an Extension

Register Early & Save

\$75

Register by February 28, 2023

\$50

Register by March 31, 2023

\$25

Register by April 30, 2023

Full deposit required. Savings deducted from balance.

Starting at

\$4,396* from Los Angeles

\$3,998* from New York

YOUR ALL-INCLUSIVE PRICE INCLUDES:

Basic Tour & Guided Sightseeing
Round-trip International Airfare

Additional baggage & optional fees may apply;
see fine print for details

Fuel Surcharges and Government Taxes
Subject to change

**Admin. Fees, Entrance Fees, Hotel Gratuities,
Program Fees, Daily Breakfast & Dinner,
Deluxe Motorcoaches, First-Class Hotels & much
more!**

*A 3.5% surcharge will be added to all credit card transactions.

EXTENSION



Wonders of Petra & the Dead Sea

November 10-13, 2023

\$1,198*

November 10 – Fly to Amman

Fly to Amman in the morning. Enjoy a tour of the city, then transfer to your Dead Sea hotel.

November 11 – Petra

Begin your journey south towards Petra today. Explore the city of Petra. Its entrance passes through a long, narrow gorge known as the Siq and can only be accessed by carriage, horseback or on foot. Once inside the city, marvel at the intricate detail of a city that was cut into the cliffsides of rose-colored rock. Travel to your hotel at the Dead Sea for dinner and overnight.

November 12 – Madaba & Mount Nebo

Travel to Madaba, the City of Mosaics, to visit the Church of Saint George with its sixth-century, Byzantine, mosaic map showing Jerusalem and other holy sites. Continue to Mount Nebo, where Moses caught a glimpse of the Promised Land (Deut. 34). On a clear day, you can see all the way across the Jordan Valley and the Dead Sea to the rooftops of Jerusalem and Bethlehem. Return to Amman and prepare for your overnight flight.

November 13 – Return to the USA

Guests taking an extension may be on a different flight than their group and/or traveling companion.

A minimum of 8 travelers are necessary to operate the extension.

*A 3.5% surcharge will be added to all credit card transactions.



TRAVEL REGISTRATION FORM

Mail to: EO Tours • P.O. Box 6098, Lakeland, FL 33807-6098
863-648-0383 • email: eo@travelwithus.com

PROGRAM CONDITIONS

INCLUDED IN PRICE:

• Round-trip international airfare • Deluxe motorcoaches • 1st class hotels • Guided sightseeing • Entrance fees to sites visited (as listed in Itinerary) • Breakfast & dinner daily • Hotel gratuities • Program fees • Administrative Fee • 3-Night River Cruise • Fuel surcharges \$500 • Government Taxes \$98 (Increases in government tax and fees are subject to change)

NOT INCLUDED IN PRICE:

• Optional Travel Protection Program (see premium schedule) • Extensions and optional sightseeing as listed in the brochure • Miscellaneous fees such as individual transfers; passports, laundry, lunches, beverages at meals & baggage fees • Voluntary "Love Offering" for guide and driver • \$100 Document fee for Non-US/Canadian residents • Visa for non-US citizens

ACCOMMODATIONS:

Price is per person based on double occupancy. When available, single rooms are often smaller than doubles. While EOT will try to match roommates, EOT cannot guarantee a roommate will be available. Roommates may be assigned as late as 30 days prior to departure and, if one is not available or you request a single room, the following charges apply: \$698 during the basic tour; \$298 for Petra.

SAVINGS:

Early registration discounts or other promotions are deducted from the balance of your bill. Hosts/Co-hosts are not eligible.

PAYMENT INFORMATION:

A 3.5% Surcharge will be added to all credit card transactions.

PAYMENT SCHEDULE:

Table with 2 columns: Payment Amount, Payment Due Dates & Notes. Rows include \$300**, \$600, \$1,200, \$1,800, Full Payment, and Travel Protection Amount.

REGISTRATIONS RECEIVED after July 18, 2023:

We welcome registrations after 07/18/23. Registrations received between 07/19/23 - 08/02/23 will incur a \$100 per person fee. Registrations received between 08/03/23 - 08/17/23 will incur a \$200 per person fee. Registrations received between 08/18/23 - 09/01/23 will incur a \$400 per person fee.

CANCELLATION FEES:

100% of Cancellation Fees are covered by the optional Travel Protection Program provided premium has been paid and reason for cancellation is coverable. Those who do not take travel protection should be aware of the following per-person cancellation penalties: From day of registration to 105 days prior to departure, you will be charged the \$100 non-refundable cancellation fee plus any airline fees.

STATEMENTS OF RESPONSIBILITY

EOT does not accept responsibility for losses or additional expenses due to delay or changes in air schedules, hotel overbookings, other hotel related problems or causes, and/or travel supplier cancellations or postponements. Travel suppliers include all tour operators, cruise lines, airlines, hotels, bus companies, entertainment venues, and any other travel supplier used to operate the tour.

FIT TO TRAVEL STATEMENT:

Passengers registering for the tour accept the responsibility for being in good health and able to walk and travel on the tour. Because many of the sites are not accessible to the physically challenged and space limitations on tour buses, wheelchairs and scooters cannot be accommodated.

PASSPORT INFORMATION:

Passport information must be submitted to our office no later than 07/18/23. Failure to provide your passport information to our office by this date may result in change fees or denial of travel.

PRICE INCREASES:

All prices quoted in this brochure are subject to change prior to payment in full due to currency fluctuations, fuel surcharge increases, government taxes and fees increases or unforeseen circumstances. In addition, you may be subject to a price increase after payment in full has been received due to potential government imposed taxes and fees.

AIRLINE ROUTES AND TICKETS:

In order to keep prices low, EOT does not guarantee the most direct routing to your final destination. Once issued, airline tickets cannot be changed or refunded thereafter. Air transportation to/from your destination will be economy class on IATA and ARC carriers utilizing APEX or SUPER APEX non-refundable, non-amendable tickets for groups of 10 or more flying together on entire itinerary.

FLIGHT TIMES AND SEATING:

All flights are subject to change by the airlines without advance notice. EOT is not responsible for such changes or delays and does not reimburse expenses resulting from such delays. If you are making your own flight arrangements to the departure city, we recommend you purchase a ticket that can be exchanged without large penalties.

ADDITIONAL AIRLINE FEES:

You will likely incur additional airline checked baggage fees that are not included in the price of the tour. These fees vary by airline and are at the airline's discretion for the entire segment of the flight itinerary.

ON OWN DEVIATIONS:

On Own Deviations from the standard tour program must be submitted in writing and are subject to additional airline fees, if applicable. Transfers for passengers who deviate are not included.

ITINERARY CHANGES:

Every effort has been made to ensure the accuracy of this brochure. While EOT will make every effort to ensure you will see all sites listed in this brochure, the availability of sites, order of sites and/or days and number of days may be altered to accommodate changes in airline, hotel schedules, and local conditions. No changes to the itinerary are effective unless approved in writing and signed by an authorized officer of the tour operator.

VALIDITY DATE:

This brochure is valid until 04/17/23. If validity date has passed, current brochures may be found at www.eo.travel. Registrations will still be accepted after the validity date.

RELEASE INFORMATION:

Payment of deposit indicates permission for EOT or its agents to record the registrant's participation and appearance on video tape, audio tape, film, photograph, or any other medium and to use the registrant's name, likeness, voice, comments, submitted documentation, written papers, and/or biographical material without restrictions or limitation for any advertising, marketing, publicity, educational or promotional purpose which EOT or its agents deem appropriate, unless the registrant or guardian otherwise notifies EOT in writing prior to departure.

Enrollment in, payment of deposit and/or acceptance of final documents, vouchers, or tickets shall be deemed to be consent to the Passenger Agreement and Program Conditions of the brochure. Prices are based on tariffs in effect as of January 1 of the previous year and are subject to adjustment without notice in the event of any change or currency fluctuation.

Except where otherwise stated, EOT acts only as agent for the relevant supplier in securing hotels, transportation and other travel services and in no event shall EOT be liable for failure by any such supplier to render any transportation, lodging or other travel service to be provided on the tour. The passenger agrees that EOT assumes no liability for injury, death, damage, loss, theft, accident, delay, any lost or damaged luggage, or irregularity which may occur by reason of any negligent or willful act or omission of any suppliers or service.

EOT does not own or operate any of the suppliers of services to your tour. Similarly without limiting the foregoing, passenger agrees to hold EOT harmless for any defect in any vehicle, plane, boat, bus, car, van or other vehicle, act of war or insurrection, terrorist activity, revolt or other civil uprising, military action, strikes or labor unrest or any Act of God or any other act of any third party. Florida law will be applicable to any dispute which arises out of or concerns this brochure or your tour. Any and all litigation must be brought only in and for courts in Polk County, Florida to the exclusion of litigation anywhere else in the world.

Educational Opportunities Tours is the tour operator and is solely responsible for the travel program. Educational Opportunities Tours is registered with the State of Florida as a Seller of Travel. Registration No. ST24130, CST2027682-40.

Host: Rev. Dave Vasquez ID#: 54421 Tour: EG23

Departure City: Los Angeles Departure Date: 10/31/23 (S)

First, Middle & Last Name must be submitted as it appears on your passport:

Guest 1: First Name: (Preferred Name) Middle Name: Last Name: Title:

Street Address: P.O. Box: City: State: Zip Code:

Phone: Alt. Phone: Email: Send me emails about my trip/EO promos

Birth Date: / / State of Birth: Sex: Male Female

Emergency Contact: Relationship: Phone: Alt. Phone:

How did you learn about this tour? Tour Selection: Basic Program Only Add Petra Extension

Guest 2: First Name: (Preferred Name) Middle Name: Last Name: Title:

Street Address: P.O. Box: City: State: Zip Code:

Phone: Alt. Phone: Email: Send me emails about my trip/EO promos

Birth Date: / / State of Birth: Sex: Male Female

Emergency Contact: Relationship: Phone: Alt. Phone:

How did you learn about this tour? Roommate(s):

If No Roommate: Try to Match Me Single Room (availability limited)

Important Information Regarding Travel Protection Plan:

- 1 Travel Protection coverage cannot be added after you have paid in full.
2 Premium is based on TOTAL cost of trip and is non-refundable.
3 Coverage begins when your premium payment is received by EOT (separate from deposit & clearly designated as your travel protection premium).
4 Premium must be paid in full no later than 07/18/23.

Guest 1: I Accept I Decline Guest 2: I Accept I Decline

DEPOSIT PER PERSON REQUIRED

Payment: \$ Check # (Payable to Educational Opportunities Tours)

To Register via Credit Card, you must go to www.EO.travel

PASSENGER AGREEMENT

By signing and submitting the registration form, I/we certify that I/we have read Passenger Agreement, Program Conditions, and Statements of Responsibility of the brochure, understand its content, and agree to its terms including but not limited to the potential for price increases that may apply before payment in full has been received as set forth in the Program Conditions and Statements of Responsibility of the brochure and potential price increases after payment in full has been received due to government imposed taxes and fees.

Guest 1 Signature: Guest 2 Signature:

Tour: EG23 Date: 103123 Code: S ID: 54421 v. 002 02/17/23

Travel Protection Plan - Premium Rates

For a full description of the plan, go to: www.tripmate.com/wpF427E

Table with 6 columns: Trip Cost, Plan Cost, Trip Cost, Plan Cost, Trip Cost, Plan Cost. Rows show price ranges from \$0 to \$1000 up to \$9001 to \$10,000.

Schedule of Coverages Maximum Benefit

Table with 2 columns: Schedule of Coverages, Maximum Benefit. Rows include Trip Cancellation, Trip Interruption, Missed Connection, Travel Delay, Medical Expense / Emergency Evacuation, Baggage and Personal Effects, Baggage Delay.

Additional Cancellation Protection When You purchase this Travel Protection Plan at or before the final payment due date for Your Trip, you also receive the Educational Opportunities Tours Pre-Departure Cancellation Waiver Benefit that allows you to cancel your Educational Opportunities Tours travel arrangements up to the day of departure for any reason (excludes no shows and those not permitted boarding). With this Educational Opportunities Tours Cancellation Waiver, your non-refundable land cancellation penalties will be refunded in Educational Opportunities Tours travel certificates. Certain travel programs are not eligible for this benefit, such as cruise and land programs listed and detailed on the Educational Opportunities website (www.eo.travel). Premiums must be paid in addition to initial or second deposit prior to the final payment for coverage to be in effect.

Part A - Travel Arrangement Benefits are provided by Educational Opportunities Tours. Part B - Travel Protection Benefits are provided by United States Fire Insurance Co. *For New York Residents Only. Part A Benefits are travel arrangement benefits underwritten by United States Insurance Company.

Conditions and Limitations

This is a brief description of the plan available for all Travel Protection sales for Trips departing January 1, 2013 and after. Certain exclusions and limitations apply and are detailed in the Certificate of Coverage. For example, coverage does not apply to: any Sickness or condition of you, a Traveling Companion or a Family Member traveling with you that existed during the 60 days prior to the effective date of the coverages (The Pre-Existing Condition Exclusion is waived if payment for this plan is received by Educational Opportunities Tours, Inc. at or before the final payment due date for Your Trip or 105 days before departure date, whichever occurs first); suicide, normal pregnancy, war or any act of war. Other Covered Reasons, as defined, includes the following events or their consequences: Cancellation or Interruption of your Trip due to: Inclement Weather, unannounced Strike, mechanical breakdown that causes complete cessation of services of Your Common Carrier for at least 12 consecutive hours; a documented traffic accident while en route to departure, being hijacked or quarantined; jury duty; destruction of your home or destination by fire, flood, burglary or natural disaster; being called to the emergency service of government to provide aid or relief in the event of a natural disaster; a documented theft of passports or visas; a transfer of employment of 250 miles or more; or Revocation of military leave. For further information ask for the Certificate of Coverage which fully details the coverages, provisions, limitations and exclusions of the plan offered and is available to you, upon request, at any time prior to your purchase of the plan. This plan is underwritten by: United States Fire Insurance Company, Eatontown, NJ. Benefits are administered by: Trip Mate, Inc., 9223 Ward Parkway, Suite 200, Kansas City, MO, 64114, 1-800-865-7292 (*in CA, dia Trip Mate Insurance Agency).